

Texas Crop Weather Report

Vandermark Wins Essay Contest

Agricultural Summary

Warm and dry conditions continued across most areas of the state with some light showers in Eastern and South Central Texas.

Winter wheat planting and land preparation were in progress in the Panhandle, Edwards Plateau, and the Blacklands.

Cotton bolls were starting to open as producers were preparing for harvest in the Panhandle.

Corn harvest was in full swing in the Northern High Plains as harvest neared completion in the

Blacklands and South Central Texas.

Sorghum harvest continued in the Panhandle as it was completed in the Blacklands.

Pecan trees were suffering from limb breakage in the Cross Timbers and South Central Texas due to the heavy crop load.

Soil moisture was adequate in most areas of the state.

East and South Central Texas received the most rain with 0.01 to 0.10 inches of rainfall.

The rest of the state was most-

ly dry with no rainfall observed.

Hay production continued across most areas of the state as weather permitted with reports of increasing quality.

Ranges and pastures across most areas of the state.

Livestock remained in good condition in most areas of the state.

Field Crops Report

Small Grains: Winter wheat planting and land preparation were in progress in the

Panhandle, Edwards Plateau, and the Blacklands. Wheat condition was mostly fair to good statewide.

Cotton: Cotton was progressing in the Northern High Plains as some bolls were starting to open.

Producers were preparing for harvest in the Southern High Plains.

Bolls were opening on early planted cotton in the Northern Low Plains.

Cotton harvest was underway in the Blacklands as weather permitted.

Good yields were reported in South East Texas as harvest continued.

Cotton condition was mostly fair to good statewide.

Corn: Corn harvest was in full swing in the Northern High Plains with good yields reported.

Growers were in the final stages of harvest in the Blacklands.

Harvest was completed in South Central Texas.

Statewide, corn condition was mostly good to excellent.

Sorghum: Sorghum remained in good condition as harvest continued in the Northern High Plains.

Harvest was progressing well in the Southern Plains. Harvest was completed in the Blacklands.

Sorghum conditions were mostly fair to good statewide.

Peanuts: Peanut harvest began in the Southern High Plains.

Peanuts were looking good in the Northern Low Plains as they continued to mature.

Peanut conditions were mostly good to excellent statewide.

Fruit, Vegetable and Specialty Crop Report

Due to a very heavy crop load in the Cross Timbers, pecans were suffering from limb breakage.

Pecans were developing and starting to drop in the Blacklands.

The pecan crop was very heavy in North East Texas with some reports of scab and hickory suck worm.

Some pecans were beginning to crack in the Edwards Plateau.

Pecan tree limbs were breaking in South Central Texas due to the tremendous weight.

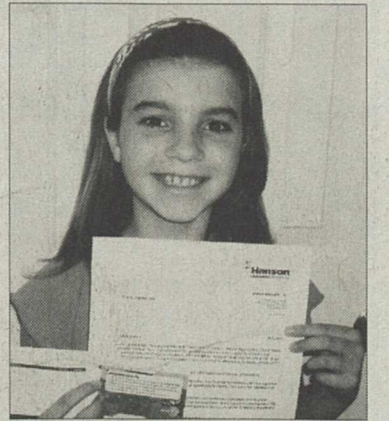
Livestock, Pasture and Range Report

Livestock continued to be in good condition across most areas of the state.

Hay production continued across most areas of the state as weather permitted with reports of increasing quality.

Ranges and Pastures remained in good condition in most areas of the state.

Statewide, range and pasture conditions were mostly good to excellent.



Carlee Vandermark has been notified that she was the winner of the Hanson Aggregate "Taking Safety Home" essay contest. Her entry displayed the winning qualities they were looking for and was selected as the best in her age group.

She received an award of a \$200 gift card and a personal letter from the President and Chief Executive James K. Kitzmiller. An article will be published in the Hanson newsletter announcing the contest winners. Per Mr. Kitzmiller's letter, it is likely that some quotes from Carlee's entry will be used in the Hanson publications and on safety posters.

Carlee is the daughter of Tim

and Geri Vandermark and the granddaughter of Buck and Barbara Watson. Barbara is employed at the Hanson Eagle Lake plant.

Pig And Hog Inventory Up Nine Percent

The Sept. 1 Texas hog and pig inventory, at 1.08 million head, was up 9 percent from the Sept. 2006 total of 990,000 head.

The number of breeding hogs totaled 100,000 head, equal to last year's total, according to figures released by the Texas Field Office.

The Sept. 1 market hog inventory was up 10 percent from a year ago to 980,000 head, 91 percent of the total hog and pig inventory.

The inventory of market hogs weighing less than 60 pounds, at 340,000 head, was up 8 percent

from the previous year.

The inventory of hogs weighing 60 to 119 pounds, at 215,000 head, was up 7 percent from the September 2006 inventory.

Market hogs weighing 120 to 179 pounds totaled 200,000 head, a 5 percent increase from last year; hogs weighing 180 pounds and over, at 225,000 head, were up 22 percent.

The June-August 2007 Texas pig crop totaled 452,000 head, a decrease of 2 percent from last year.

Pigs per litter averaged 8.70,

down 9 percent from the previous year.

State Director, David Abbe, reported that 52,000 sows farrowed in Texas during June through August 2007, up 8 percent from last year.

The U.S. inventory of all hogs and pigs on Sept. 1, is estimated at 64.6 million head, up 3 percent from Sept. 1, 2006 and June 1, 2007, inventory.

The breeding hog inventory, at 6.14 million head, was up 1 percent from last year.

Market hog inventory, at 58.5 million head, was up 3 percent from last year.

The U.S. pig crop for June-August 2007, at 27.5 million head, was up 4 percent from 2006.

U.S. producers intend to have 2.96 million sows farrow during the September-November 2007 period, up 1 percent from the actual farrowing during the same period in 2006.

Intended farrowing for December 2007-February 2008, at 2.94 million sows, are up 1 percent from the same period last year.

Oil And Gas Permits Up From Year Ago

The Commission issued a total of 2,234 original drilling permits in August 2007 compared to 1,865 in August 2006.

The August total included 1,880 permits to drill new oil and

gas wells, 120 to re-enter existing well bores, and 234 for re-completions.

Permits issued in August 2007 included 290 oil, 570 gas, 1,252 oil and gas, 97 injection, zero service

and 25 other permits.

July Crude Oil Production

Texas preliminary July 2007 crude oil production averaged 844,150 barrels daily, down from the 915,737 barrels daily average

of July 2006.

The preliminary Texas crude oil production figure for July 2007 is 26,168,640 barrels, a decrease from 28,466,951 barrels reported during July 2006.

August Oil And Gas Completions

In August 2007, operators reported 334 oil, 529 gas, 54 injection and three other completions compared to 441 oil, 815 gas, 30 injection and zero other completions during August 2006.

Total well completions for 2007 year to date are 9,461 up from 8,768 recorded during the same period in 2006.

Operators reported 529 holes plugged and three dry holes in August 2007 compared to 544 holes plugged and 14 dry holes in July 2006.

July Natural Gas Production

Texas oil and gas (wells produced 478,578,413 Mcf (thousand cubic feet) of gas based upon preliminary production figures for July 2007, up from the July 2006 preliminary gas production total of 440,099,051 Mcf.

Texas production in July 2007 came from 130,291 oil and 76,378 gas wells.

Adams To Practice In Eagle Lake

Doctor Larry Adams, a general surgeon, has started practice in Colorado County as of September, 2007. Doctor Adams will have offices both in Columbus and Eagle Lake.

He will practice and perform surgery in both locations. Dr. Adams was recruited through a joint effort between Rice Medical Center and Columbus Community Hospital.

"With two surgeons available for surgery call both hospitals have improved their coverage while providing time off for the two surgeons," Larry Parsons, administrator of Rice Medical Center, stated.

Doctor Adams was trained in Texas. He received his undergraduate degree at Texas A&M University in 1982.

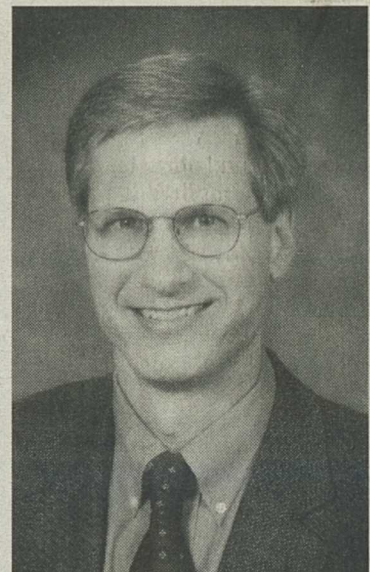
He then received a degree in Nursing from the University of Texas Medical Branch at Galveston prior to going to medical

school. He then attended University of Texas Southwest Medical School in Dallas.

He completed his course in 1991, graduating with a Doctor of Medicine degree. He was accepted for internship at Saint Paul Medical Center, Dallas and later was granted the privilege of completing a four-year residency program at Saint Paul Medical Center.

Doctor Adams went to work in Cleburne after completing his residency. He practiced there until 1998 when he expanded his practice to include Granbury. He practiced in both locations until 2003 when he moved to Mt. Pleasant, and opened his practice in 2004.

Doctor Adams has been married to his wife Laura Ann for the past 20 years. They have two children Eric and Gina. They plan to



Dr. Larry Adams

reside in Columbus at this time. Anyone interested in contacting Dr. Adams for an appointment may call Rice Medical Associates at 979-234-2551.

Entries Sought For Car Show

Classic cars and refurbished trucks come to the Blinn College campus in Brenham each fall for the annual Blinn College Homecoming Car Show.

This year's show on Oct. 19-20 is the 26th year for the event and begins with a cruise to Brenham Airport on Friday at 6 p.m. and continues with the show on Saturday from 9 a.m. to 3 p.m.

"Our show continues to grow each year, attracting more and more entrants," says show organizer Johnnie Schroeder, industrial education instructor and advisor for the Agriculture Mechanic Club of Blinn College, sponsor of the event. "The show is growing in reputation around the region."

The show is open to all show vehicles -- cars and trucks. The entry fee is \$10 and includes the cost of lunch and refreshments. Door prizes and trophies will be awarded at 1 p.m. Participants in the show will be invited to take part in the homecoming parade on campus at 2 p.m.

For more information contact Schroeder at 979-830-4266 or at jschroeder@blinn.edu.

For more information about the college's other homecoming activities call 979-830-4180 or

email gvierus@blinn.edu.

Blinn College, a state-supported two-year college founded

in Brenham and with campuses in Bryan, Schulenburg and Sealy, is marking its 125th anniversary.

State Sheep And Goat Validations October 22

State Sheep and goat validation for Colorado County is scheduled for Monday, Oct. 22 from 3:30 to 5:30 p.m. at the Rice Consolidated Agriculture Facilities.

The youth exhibiting the animal and a parent or legal guardian

must be present at the time of validation.

For more information contact the Colorado County Extension office or your local Ag Science Teachers.

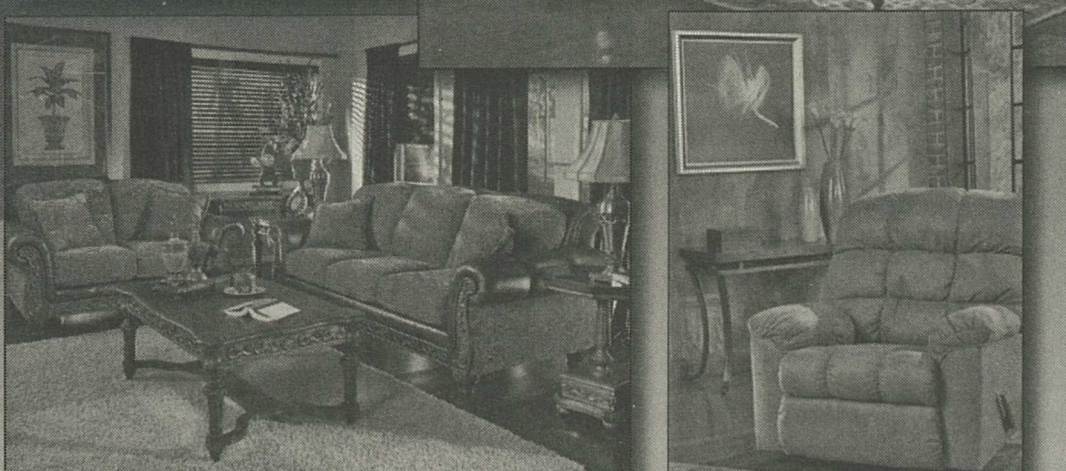
EAGLE LAKE WEATHER REPORT			
Information Courtesy of Texas A&M University System Agricultural Research and Experiment Station, Eagle Lake			
Date	Temp (H/L)	Rainfall(in.)	
Mon. 9-24-07	90/66	0.00	
Tue. 9-25-07	90/68	0.00	
Wed. 9-26-07	92/69	0.00	
Thu. 9-27-07	92/68	0.00	
Fri. 9-28-07	91/67	0.00	
Sat. 9-29-07	88/72	0.01	
Sun. 9-30-07	92/72	0.00	

Ashley Furniture is the #1 Furniture Brand in America Available at

Harper's Furniture



No Credit Check Financing



314 Fowlkes Street, Sealy (Next to Bill's Grocery) • (979) 885-3700